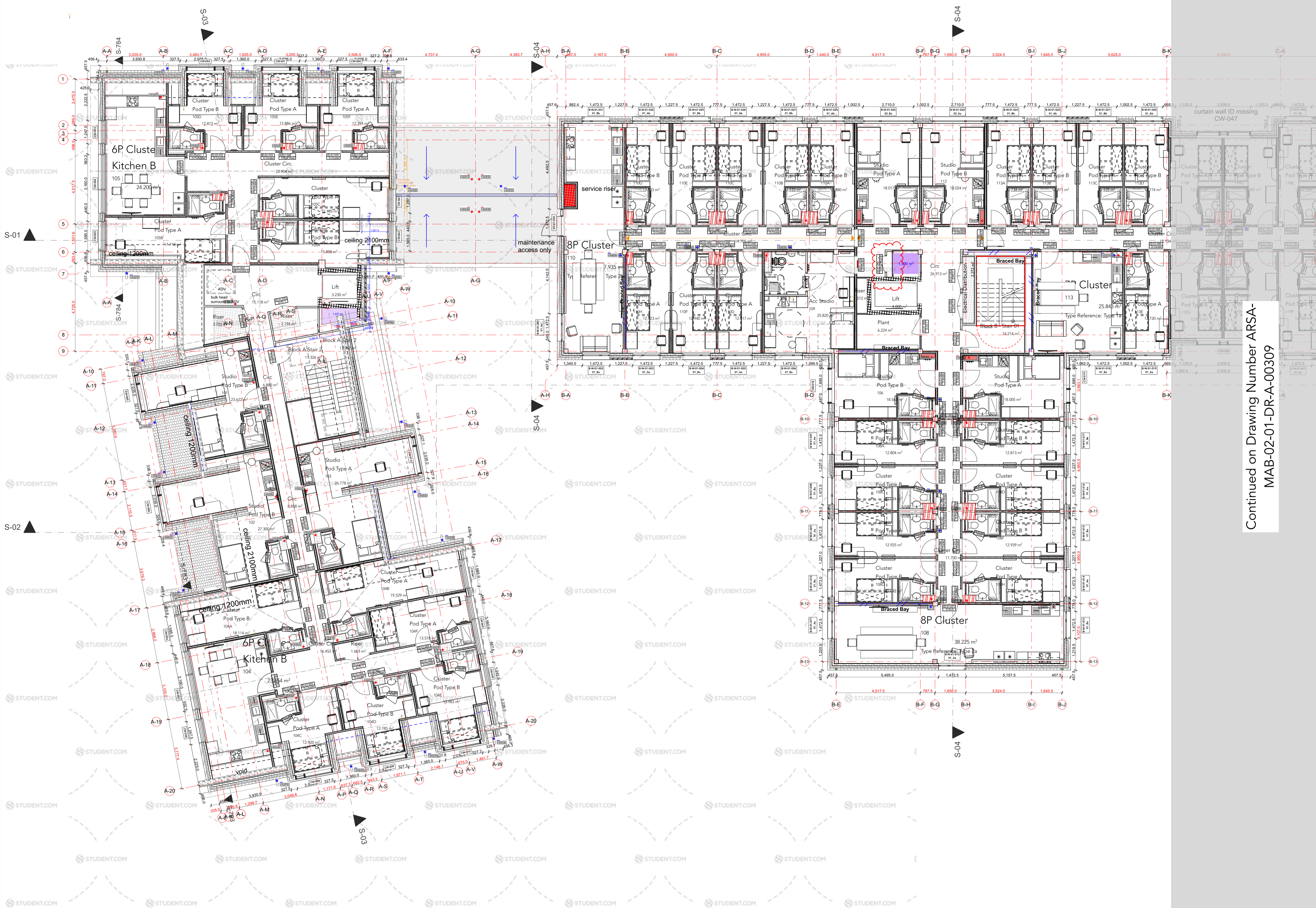


Blocks A&B

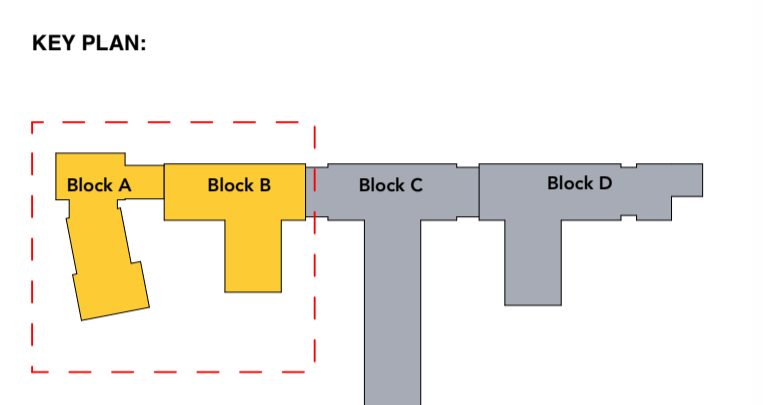


CONSTRUCTION PHASE HAZARD IDENTIFICATION
 In accordance with the Construction (Design & Management) Regulations 2015

CDM

The hazard sign is a notification to other designers and contractors of foreseeable exceptional risks resulting from the design activities carried out by Maber Associates Ltd. which are beyond those reasonably expected to be identified by a competent person; as defined in the Construction (Design and Management) Regulations 2015 - Regulations 9 & 10 and Industry Guidance for Designers (Section 4) published by the CITB (2015)

DRAWING REVIEWED: (yes OR no)	YES
EXCEPTIONAL RISKS/ RISK CONTROL MEASURES: (none OR see warning triangle on drawing)	



- U Values - W/m²K:**
- External walls - 0.21
 - Floor - 0.15
 - Roof - 0.15
 - Windows - 1.2
 - Curtain Walling - 1.3
 - Glazing G-value - 0.4
 - Thermal bridging - unaccredited approach

- As specified by BSAP
- Note:**
- To be read in conjunction with the following:
- Architects Plans, Sections, Elevations, all schedule information / RDS / NBS.
 - Structural Engineers, M+E consultants information / specification
 - Fire strategy report
 - Acoustic report

- Internal Partitions:**
- Maximum internal partition Thickness 150mm.
- All wall types, specifications and details subject to Sub Contractor design. Board specification for tiled/wet areas to be advised by Dry Lining Sub Contractor.
- External doors:**
- All external doors to achieve min clear width of 850mm
- Note:**
- Masonry Movement Joint to be less than 12m apart above/below window/door opening
 - Masonry Movement Joint to be less than 12m apart

C06	01.02.2022	Updated following client alterations and fire strategy workshop	OoD	RHAI
C05	24.12.2021	General update	OoD	RHAI
C04	11.11.2021	Updated to reflect the 465 bed scheme in line with GTB instruction S-010	OoD	RHAI
C03	22.10.2021	General update in line with GTB instruction CW009 received 11/10/21	OoD	RMA
C02	19.08.2021	Additional riser shown as clouded	RMA	RHAI
C01	03.08.2021	All pv & selected roof balustrades removed status changed	CJA	RHAI
P10	01.06.2021	General update, window & internal door tags updated as per schedules issued, masonry movement joints indicated	CJA	RHAI
P09	06.05.2021	General update, room numbering added	CJA	RHAI
P08	29.03.2021	General update following Internal partition set out in line with Knaufl K10 spec	RMA	RHAI
P07	12.02.2021	Grid lines updated in line with Eng. drawings	RMA	RHAI
P06	15.02.2021	Internal layouts amended to avoid structural steel where possible, Pod risers amended to reflect Walker modular CSI, Kitchen counter zones added identifying riser location in red as discussed in DTM03	RMA	RHAI
P05	29.01.2021	Update following M+E workshop 19.01.2021	RHAI	NKE
P04	11.12.2020	Grid updated, dimensions updated.	CJA	RHAI
P03	12.10.2020	Updated in line with revised planning info	RHAI	NKE
P02	12.03.2020	Tender issue	RHAI	NKE
P01	28.02.2020	Drawing created	RSI	RHAI

rev	date	description	by	ckd					
Construction									
project	Albany Road, Coventry								
document	GA First Floor Plan - Blocks A&B								
reference	project	origin	zone	level	type	role	no.	status	rev.
	ARSAMAB	01	01	DR	A		00303	A5	C06
int. job no.	2955		paper size	A1		scale	As Shown		

First Floor Blocks A&B
 1:100

maber architecture / interiors / landscape
 Email: info@maber.co.uk
 maber.co.uk
 Notingham

00303

Do not scale from this drawing - dimensions and levels to be checked on site by the contractor. All dimensions in millimetres unless otherwise noted - all levels in metres unless otherwise noted. The file, copyright and confidential information in this document belongs to Maber Associates Limited. Copyright 2022. All rights reserved. You may not reproduce this document or disclose it to others without the consent of Maber Associates Limited.